

GemLoupe User Manual



Scan to watch
the Setup Video



Meet the GemLoupe

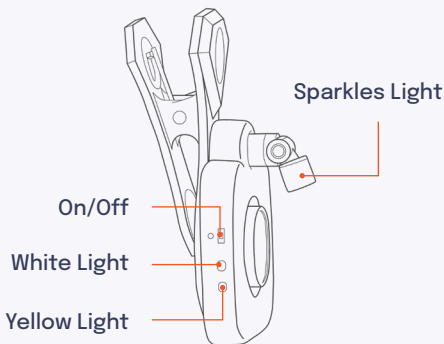
GemLoupe is a custom 5X lens that turns your phone into a professional jewelry camera. It captures just the perfect amount of details using any smartphone device anytime, anywhere.



GemLoupe Lighting



GemLoupe has 3 different lighting settings: Sparkles, White, and Yellow.



Sparkles Light is a direct light source designed to bring out the natural fire and diamond scintillation. Turn this light on to capture the sparkles in your gemstones.

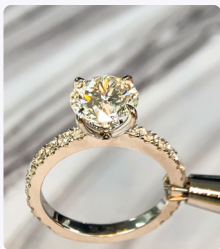
White Light is configured at 5500K; perfect for diamonds and fine jewelry.

Yellow Light is configured at 3500K; perfect for gems like emeralds, rubies, and opals.

Taken with GemLoupe



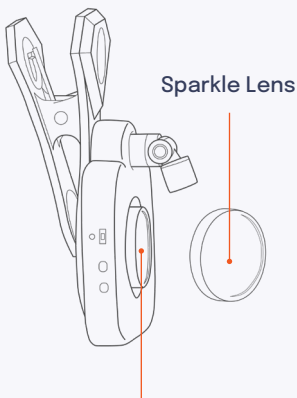
Taken with White Light



Taken with Yellow Light



To change the light intensity, press the side button up to three times.



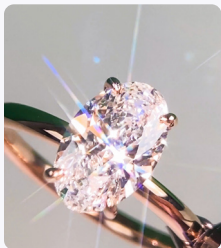
5X Lens

5X magnification, perfect for jewelry and gemstones



The Sparkle Lens can be removed when you do not want to capture sparkles

Taken with Sparkle Lens



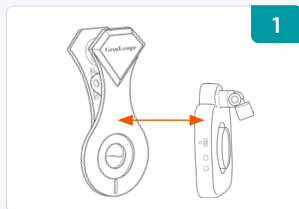
Taken with Sparkle Lens



Taken without Sparkle Lens

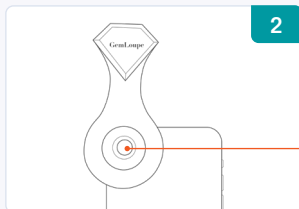
Installing GemLoupe

Please ensure that you follow all the steps exactly to achieve the best results.



1

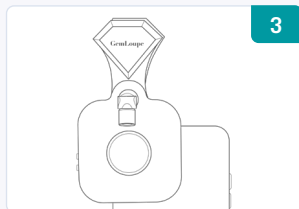
Detach the clip from the GemLoupe



2

Place the clip onto the phone camera

Make sure the lens is in the center of the hole.



3

Attach the body onto the clip

Taking Photos and Videos



4



Place your phone on the smartphone stand

5



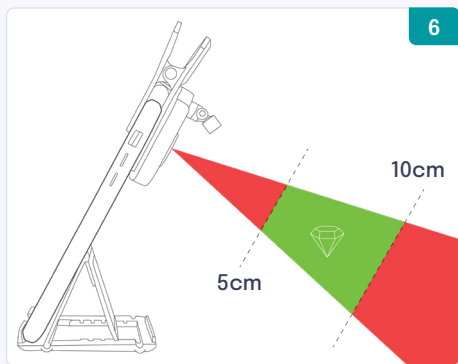
Open the GemLightbox app & select GemLoupe

Having trouble? Visit
support.picupmedia.com

Taking Photos and Videos



Place the jewelry or gemstones in front of the GemLoupe and capture!



NOTE: The 5x lens has a shooting distance of 5–10 cm (2–4 in). When in use, make sure the jewelry and gemstones are placed within the focal range.

How to Charge

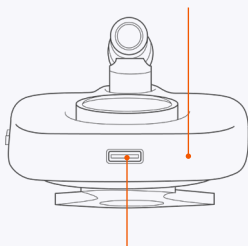


Connect the **GemLoupe** to a power outlet using the **charging cable** and a **5V power adapter** (not included)

Light Indicator

 Low Battery

 Full Battery



USB-C Connector

Precautions for Use



Dust prevention

Please refrain from touching the lens directly. Always hold the lens from the cap only. If there is dust, use an air blower or microfiber cloth for gentle cleaning.

Liquid prevention

Please prevent contact with any liquids as they may leave stains on the lens resulting in blurry images and videos.

Breakage prevention

The lenses are made of high-quality glass which will break if impacted. Put the lens back into the case after each use.

GemLightbox Collection



Related Products

4.8 ★

456 Reviews



GemLightbox & Turntable Set

- ✓ Jewelry photography
- ✓ Jewelry 360 videos

4.9 ★

333 Reviews



GemLightbox Macro

- ✓ 10X magnification
- ✓ For loose diamonds and gemstones
- ✓ 0.1 carat to 50 carats

www.picupmedia.com/shop-page

Join the Global Jewelers Network



Discuss, learn, and network with other jewelers worldwide



Join the Digital Jewelers Facebook Group

Find us on social media



@gemlightbox



GemLightbox



Picup Media



@picup_media



Thank you!

At GemLightbox, we've helped over 10,000+ jewelers enter the digital world and we hope to share the same experience with you!

We created GemLoupe during the pandemic to seamlessly assist the industry into going digital when going digital is the ONLY way forward.

As you take your first GemLoupe photo, we want to say thank you and congratulations! The digital future is now, together, we will thrive!

Onwards to business resiliency!

The GemLightbox Team

What's Included?



1pc GemLoupe



1pc Sparkle Lens



1pc 5x Lens



1pc Power Cord



1pc Smartphone Holder



1pc Cleaning Cloth



1pc Lanyard



Please observe the country-specific disposal requirements