

# GemLightbox

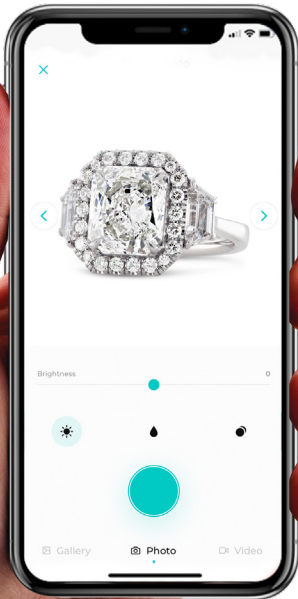
## User Manual

Welcome to the GemLightbox Family





# Table of Contents



<b>3</b>	.....	<b>Introduction</b>
<b>4</b>	.....	<b>Getting Started</b>
<b>5</b>	.....	<b>GemLightbox Application</b>
<b>6</b>	.....	<b>GemLightbox</b>
<b>7</b>	.....	<b>What's Included</b>
<b>8</b>	.....	<b>Setting Up</b>
<b>9</b>	.....	<b>Features</b>
<b>11</b>	.....	<b>FAQ</b>
<b>12</b>	.....	<b>Join Our Community</b>



## We are thrilled to guide you on your first steps to effortless jewelry photography.

At Picup Media, we've helped over 5,000+ jewelers enter the digital world and hope to share the same experience with you.

This user manual will teach you how to set up and use the GemLightbox, its add-ons, and provide useful tips and tricks to help you capture perfect jewelry images and videos.

We recommend reading our full tutorial on the following pages to make the most of your GemLightbox experience.

[support.picupmedia.com](https://support.picupmedia.com)

# Getting Started



The GemLightbox Application is your all-in-one jewelry photography companion, and is essential to capturing amazing jewelry images and videos. Simply follow the steps below to get started:



Google  
Play Store

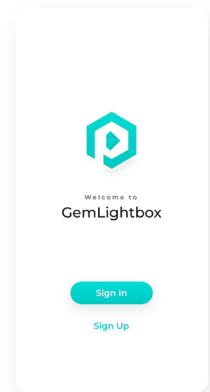
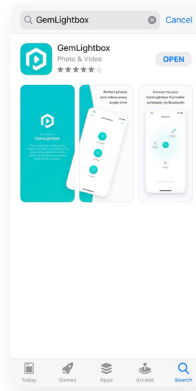


iOS  
App Store

## 1 Download the Application

The GemLightbox Application is available to download on both the iOS App Store and Google Play Store.

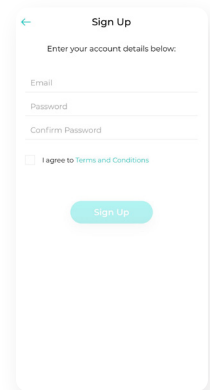
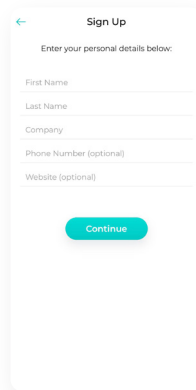
To download, simply search for "GemLightbox" and follow the download instructions, or scan the QR code.



## 2 Create an Account

Click "Sign Up", then follow the steps to create your GemLightbox Application account.

Please note that only one device may be logged into an account at any time.



# GemLightbox Application

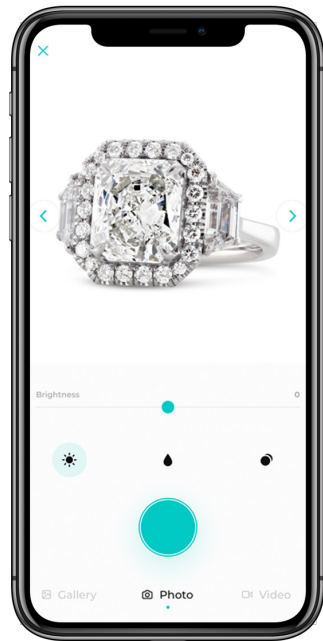


## Setting Up

The GemLightbox Application optimizes your smartphone camera settings for jewelry photography, meaning that you'll capture the best results every time.

The GemLightbox Application connects with your Turntable or Aerial unit directly via Bluetooth. Please ensure that the Bluetooth setting on your smartphone is enabled in order to successfully connect with the GemLightbox Turntable or GemLightbox Aerial.

To learn more about the GemLightbox Application functions and its newest updates, simply visit our online knowledge base at <https://support.picupmedia.com> for more information.



Watch Setup Video here:





# GemLightbox





# What's Included



**GemLightbox**  
1pc



**Photography Table**  
1pc



**Necklace & Earring Stand**  
1pc



**Magnetic Stand**  
1pc



**Smartphone Holder**  
1pc



**Universal Power Adapter**  
1pc

The GemLightbox Application:



# Setting Up



## 1 Turn on the GemLightbox

Connect the GemLightbox to power by using the supplied power adapter.



## 2 Set up the photography table

**For flat jewelry pieces, use the photography table.** Place the magnetic stand with the photography table in the center of the GemLightbox.

**For necklaces and earrings, hang your jewelry on the grooves or stud holes of the **Necklace & Earring Stand**, then place it in the center of the GemLightbox: **Note the Magnetic Stand should not be used.****



## 3 Photograph your jewelry

When photographing, please ensure that the front reflector is always attached to the GemLightbox.

The front reflector can be placed horizontally or vertically, and serves two key purposes: (1) flexibility for the front shooting angle, and (2) controlling the reflections captured in your metals and stones.

The reflections in your metals will always look amazing - regardless of how the reflector is attached.



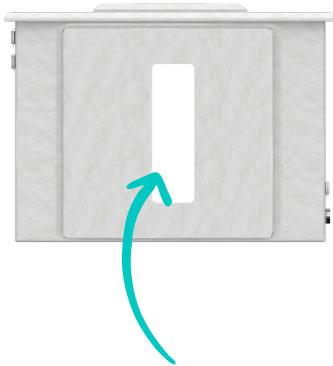
Watch How to Setup the GemLightbox here:





## Shooting Angles

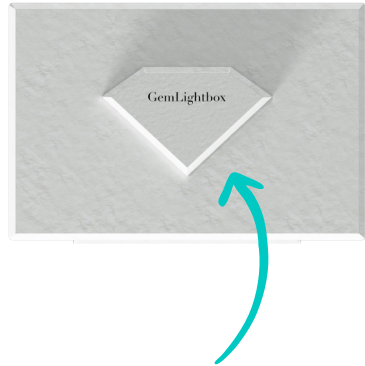
There are two main shooting angles you can use with the GemLightbox:



**Front Shot**

**Primary angle for jewelry images and videos**

Place your phone on the supplied smartphone stand, adjust the angle as required and capture.



**Top Shot**

**Aerial view of jewelry**

To shoot from the top, remove the diamond piece from the GemLightbox lid. Position your phone on top of the lid, ensuring that the camera lens is looking through the hole, and capture.

The top shot works best with larger pieces and hand photography.

Watch GemLightbox  
Two Shooting Angles here :





## Lighting Options

Every GemLightbox is fitted with two additional lighting options:

### Sparkles

Brings out the blind facets and sparkles in your gemstones and the fires in your opals.

To use Sparkles, press the Sparkles button on the side of the GemLightbox. Sparkles does not change the true color of your jewelry.



### Daylight

A yellow light designed to emulate a natural lighting environment and bring out the warmer tones in your jewelry. Daylight works best with colored gemstones and hand photography.

To use Daylight, press the Daylight button on the side of the GemLightbox. Note that your images will not appear on a white background when you shoot with Daylight.

**Sparkles and Daylight work best when shooting videos and can be used together to bring the best out of your jewelry.**

Watch GemLightbox Lighting Options here :





## How can I contact support?

You can access our support channel and knowledge base at

<https://support.picupmedia.com/>

If you wish to speak to a Picup Media team member, please visit

<https://picupmedia.com/contact-us/>

## What is the warranty for the GemLightbox?

Unless specified by your country, the GemLightbox comes with a one year warranty.

To see our warranty policy, please visit the following page: <https://bit.ly/35uzgOr>

## How can I clean my GemLightbox?

The GemLightbox is extremely durable. You can use a wet cloth and any household cleaner to clean your GemLightbox. Please ensure your GemLightbox is switched off and that the power cable is detached before cleaning.



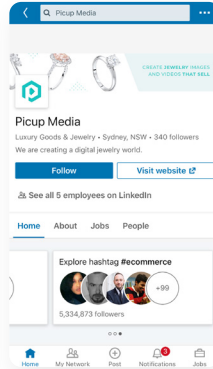
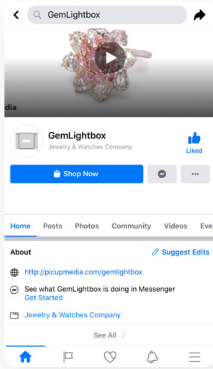
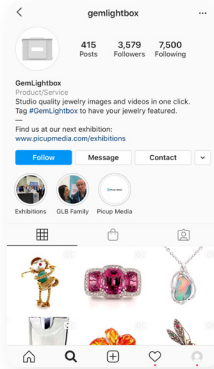
Please observe the country-specific disposal requirements

# Join Our Community



Share your beautiful jewelry images with thousands of other GemLightbox users on our fan pages:

## Join our #GemLightbox family







**Thank you**  
for choosing GemLightbox



Please observe the country-specific disposal requirements