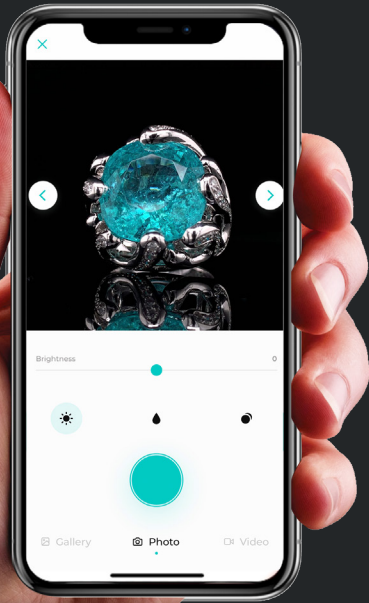


# GemLightbox Eclipse

User Manual

Welcome to the GemLightbox Family

# Table of Contents



3	.....	Introduction
4	.....	GemLightbox Eclipse
5	.....	What's Included
6	.....	Setting Up
8	.....	Getting Started
9	.....	GemLightbox Application
10	.....	Features
11	.....	FAQ
12	.....	Join Our Community



## Capture flawless black background images and videos with the GemLightbox Eclipse.

Eclipse sits perfectly on the GemLightbox Turntable, and our unique design allows you to achieve radiant jewelry images and videos on a completely black background.

This user manual will teach you how to set up and use the GemLightbox Eclipse, and provide useful tips and tricks to help you capture perfect black background jewelry images and videos.

We recommend reading our full tutorial on the following pages to make the most of your GemLightbox Eclipse.

[support.picupmedia.com](https://support.picupmedia.com)



# GemLightbox Eclipse



# What's Included



**GemLightbox Eclipse**  
1pc



## GemLightbox Eclipse

### 1 Set up the Gemlightbox Eclipse

Remove the Gemlightbox Turntable disc from the Turntable. Note that the disc is attached magnetically to the Turntable.



### 2 Affix the Gemlightbox Eclipse onto the Turntable

Place the Gemlightbox Eclipse cover over the Turntable. Rotate the Eclipse cover until it locks firmly in place to the Gemlightbox Turntable magnetically.



### 3 Lift the Gemlightbox Eclipse lid

Using the finger sockets on the sides, lift the lid gently. Place your jewelry in the center and start shooting your jewelry.





## GemLightbox Turntable

### 1 Set up the GemLightbox Turntable

Place the turntable inside the GemLightbox, with the flat side aligned with the back wall. Connect the turntable to the GemLightbox using the supplied power cord.

### 2 Switch on the GemLightbox Turntable

To switch on the turntable, click the small black button as indicated on the image. When switched on, the LED tube on the rear of the turntable will light up.

It is safe to leave your turntable on and plugged into your GemLightbox unit. Simply power off the entire GemLightbox unit after each photography session.

### 3 Connect the GemLightbox Turntable via bluetooth

Open the GemLightbox Application and connect the turntable via bluetooth.

The GemLightbox turntable is designed for full compatibility and function with the GemLightbox Application. The GemLightbox Application allows you to control the turntable with options to capture 360, 90 or 45 degrees at a fast or slow speed.



Power Button



# Getting Started



The GemLightbox Application is your all-in-one jewelry photography companion, and is essential to capturing amazing jewelry images and videos. Simply follow the steps below to get started:



Google  
Play Store

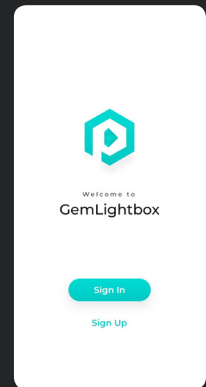
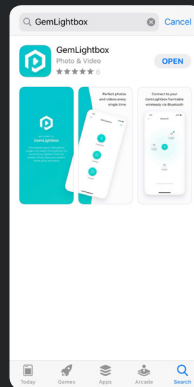


iOS  
App Store

## 1 Download the Application

The GemLightbox Application is available to download on both the iOS App Store and Google Play Store.

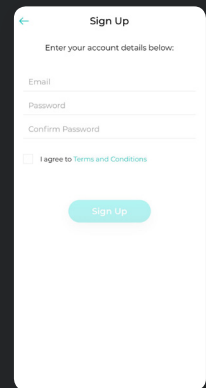
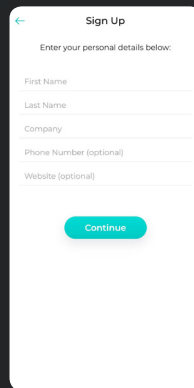
To download, simply search for "GemLightbox" and follow the download instructions, or scan the QR code.



## 2 Create an Account

Click "Sign Up", then follow the steps to create your GemLightbox Application account.

Please note that only one device may be logged into an account at any time.





# GemLightbox Application

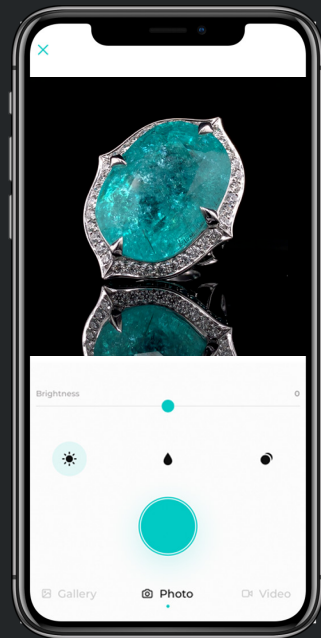


## Setting Up

The GemLightbox Application optimizes your smartphone camera settings for jewelry photography, meaning that you'll capture the best results every time.

The GemLightbox Application features the Eclipse filter. The Eclipse filter is specifically designed to capture images and videos on the Eclipse. To capture black background images & videos, simply select the Eclipse filter, tap to focus, darken the background, and capture!

To learn more about the GemLightbox Application functions and its newest updates, simply visit our online knowledge base at <https://support.picupmedia.com> for more information.



The GemLightbox Application:





The GemLightbox Eclipse works with all types of jewelry and provides an elegant, subtle reflection underneath your jewelry.



There is a small indent indicating the center of the Eclipse, which helps you center the jewelry. To achieve the best results with your jewelry photos and videos, make sure your jewelry is centered before capturing.

Eclipse is created using a unique glass material designed to provide amazing black backgrounds and reflections for your jewelry and gemstones. We recommend cleaning the Eclipse. We recommend cleaning the Eclipse with a wet cloth and any household cleaner.

**Do not attempt to remove any stains, dust or blemishes with tape or other materials.**



## How can I contact support?

You can access our support channel and knowledge base at

<https://support.picupmedia.com/>

If you wish to speak to a Picup Media team member, please visit

<https://picupmedia.com/contact-us/>

## What is the warranty for the GemLightbox?

Unless specified by your country, the GemLightbox comes with a one year warranty.

To see our warranty policy, please visit the following page: <https://bit.ly/35uzgOr>

## How can I clean my GemLightbox?

The GemLightbox is extremely durable. You can use a wet cloth and any household cleaner to clean your GemLightbox. Please ensure your GemLightbox is switched off and that the power cable is detached before cleaning.



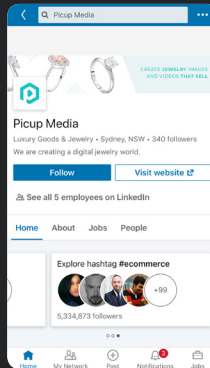
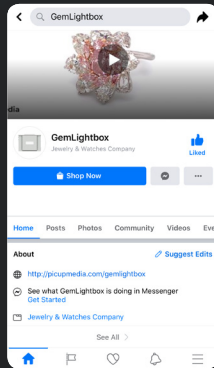
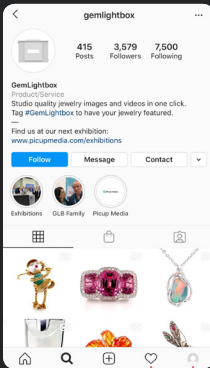
Please observe the country-specific disposal requirements

# Join Our Community



Share your beautiful jewelry images with thousands of other GemLightbox users on our fan pages:

Join our **#GemLightbox** family





**Thank you**  
for choosing GemLightbox



Please observe the country-specific disposal requirements