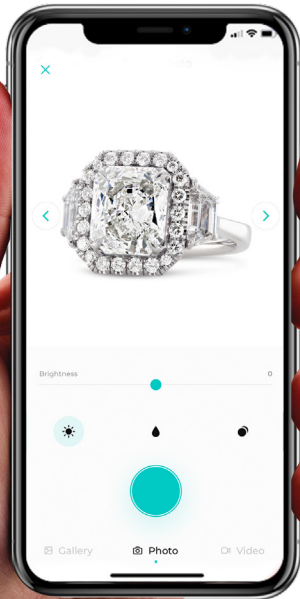


GemLightbox Turntable & Aerial Set

User Manual

Welcome to the GemLightbox Family

Table of Contents



3	Introduction
4	Getting Started
5	GemLightbox Application
6	GemLightbox
11	GemLightbox Turntable
15	GemLightbox Aerial
19	FAQ
20	Join Our Community



We are thrilled to guide you on your first steps to effortless jewelry photography.

At Picup Media, we've helped over 5,000+ jewelers enter the digital world and hope to share the same experience with you.

This user manual will teach you how to set up and use the GemLightbox, its add-ons, and provide useful tips and tricks to help you capture perfect jewelry images and videos.

We recommend reading our full tutorial on the following pages to make the most of your GemLightbox experience.

support.picupmedia.com

Getting Started



The GemLightbox Application is your all-in-one jewelry photography companion, and is essential to capturing amazing jewelry images and videos. Simply follow the steps below to get started:



Google
Play Store

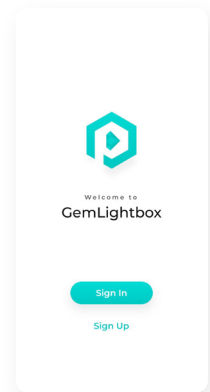
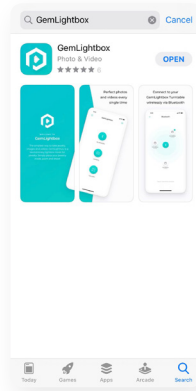


iOS
App Store

1 Download the Application

The GemLightbox Application is available to download on both the iOS App Store and Google Play Store.

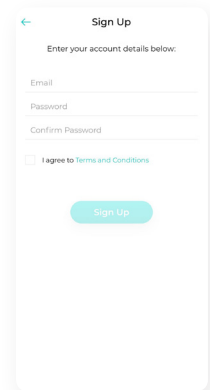
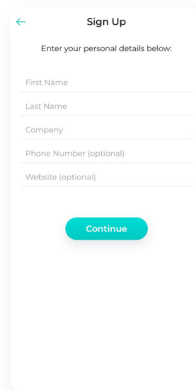
To download, simply search for "GemLightbox" and follow the download instructions, or scan the QR code.



2 Create an Account

Click "Sign Up", then follow the steps to create your GemLightbox Application account.

Please note that only one device may be logged into an account at any time.



GemLightbox Application

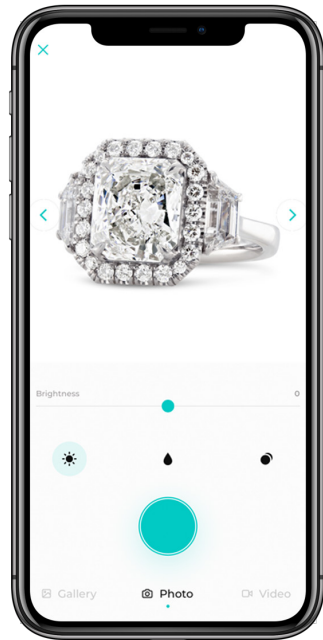


Setting Up

The GemLightbox Application optimizes your smartphone camera settings for jewelry photography, meaning that you'll capture the best results every time.

The GemLightbox Application connects with your Turntable or Aerial unit directly via Bluetooth. Please ensure that the Bluetooth setting on your smartphone is enabled in order to successfully connect with the GemLightbox Turntable or GemLightbox Aerial.

To learn more about the GemLightbox Application functions and its newest updates, simply visit our online knowledge base at <https://support.picupmedia.com> for more information.



The GemLightbox Application:





GemLightbox



What's Included



GemLightbox
1pc



Photography Table
1pc



Necklace & Earring Stand
1pc



Magnetic Stand
1pc



Smartphone Holder
1pc



Universal Power Adapter
1pc

Watch How to Setup the GemLightbox here:



Setting Up



1 Turn on the GemLightbox

Connect the GemLightbox to power by using the supplied power adapter.



2 Set up the photography table

For flat jewelry pieces, use the photography table. Place the magnetic stand with the photography table in the center of the GemLightbox.

For necklaces and earrings, hang your jewelry on the grooves or stud holes and place it in the center of GemLightbox.



3 Photograph your jewelry

When photographing, please ensure that the front reflector is always attached to the GemLightbox.

The front reflector can be placed horizontally or vertically, and serves two key purposes: (1) flexibility for the front shooting angle, and (2) controlling the reflections captured in your metals and stones.

The reflections in your metals will always look amazing - regardless of how the reflector is attached.



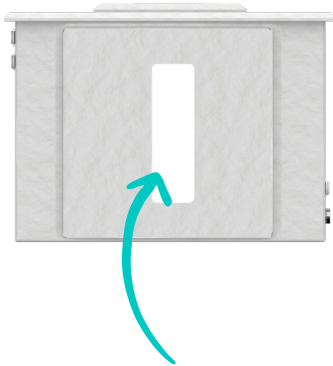
Watch How to Setup the GemLightbox here:





Shooting Angles

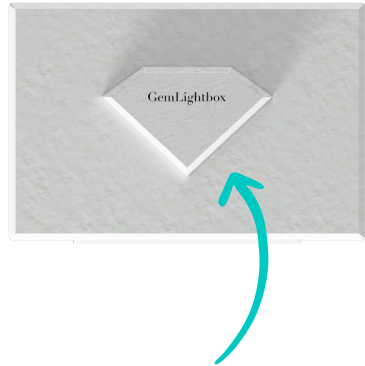
There are two main shooting angles you can use with the GemLightbox:



Front Shot

Primary angle for jewelry images and videos

Place your phone on the supplied smartphone stand, adjust the angle as required and capture.



Top Shot

Aerial view of jewelry

To shoot from the top, remove the diamond piece from the GemLightbox lid. Position your phone on top of the lid, ensuring that the camera lens is looking through the hole, and capture.

The top shot works best with larger pieces and hand photography.

Watch GemLightbox
Two Shooting Angles here :



Features



Lighting Options

Every GemLightbox is fitted with two additional lighting options:



Sparkles

Brings out the blind facets and sparkles in your gemstones and the fires in your opals.

To use Sparkles, press the Sparkles button on the side of the GemLightbox. Sparkles does not change the true color of your jewelry.

Daylight

A yellow light designed to emulate a natural lighting environment and bring out the warmer tones in your jewelry. Daylight works best with colored gemstones and hand photography.

To use Daylight, press the Daylight button on the side of the GemLightbox. Note that your images will not appear on a white background when you shoot with Daylight.

Sparkles and Daylight work best when shooting videos and can be used together to bring the best out of your jewelry.

Watch GemLightbox Lighting Options here :

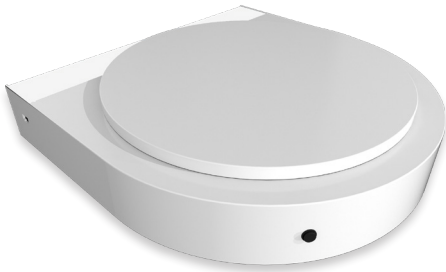




GemLightbox Turntable



What's Included



GemLightbox Turntable
1pc



Power Cord
1pc

Watch Capturing 360 videos using
the GemLightbox Turntable here :





1 Set up the GemLightbox Turntable

Place the turntable inside the GemLightbox, with the flat side against the back wall.

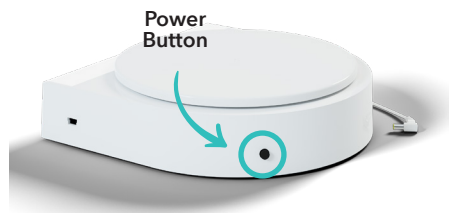
Connect the turntable to the GemLightbox using the supplied power cord.



2 Switch on the GemLightbox Turntable

To switch on the turntable, click the small black button as indicated on the image. When switched on, the LED tube on the rear of the turntable will light up.

It is safe to leave your turntable on and plugged into your GemLightbox unit. Simply power off the entire GemLightbox unit after each photography session.



Watch Capturing 360 videos using the GemLightbox Turntable here :





3 Connect the GemLightbox Turntable via bluetooth

Open the GemLightbox Application and connect the turntable via bluetooth.

The GemLightbox turntable is designed for full compatibility and function with the GemLightbox Application.

The GemLightbox Application allows you to control the turntable with options to capture 360, 90 or 45 degrees at a fast or slow speed.



Please Note

There is a small indent indicating the center of the turntable, which helps you center the jewelry. To achieve the best results with your jewelry photos and videos, make sure your jewelry is centered before capturing.

The turntable is UV coated to provide amazing white backgrounds and reflections for your jewelry and gemstones. We recommend cleaning the Turntable top with a wet cloth and any household cleaner.

Please do not attempt to remove any stains, dust or blemishes with tape or other materials.



Watch Capturing 360 videos using the GemLightbox Turntable here :





GemLightbox Aerial



What's Included



GemLightbox Aerial
1pc



Aerial Power Cord
1pc



Necklace & Pendant Holder
1pc



Dangle Earring Holders (clear)
4pcs



Dangle Earring Holders (black)
4pcs



Watch & Bangle Holder
1pc

Watch How to Setup the GemLightbox Aerial here:





1 Set up the GemLightbox Aerial

Remove the existing diamond top lid. Position your GemLightbox Aerial below the lid and attach the Aerial diamond piece magnetically to the Aerial turntable from the top of the GemLightbox lid.

The Aerial will power on automatically, denoted by the LED light lighting up on the top of the Aerial.



2 Switch on the GemLightbox Aerial

Connect the GemLightbox Aerial to the GemLightbox with the supplied power cord.

It is safe to leave your Aerial on and plugged into your GemLightbox unit. Simply power off the entire GemLightbox unit after each photography session. When you next turn on the GemLightbox, the Aerial will remain switched on and ready for use.



Watch How to Setup the GemLightbox Aerial here:

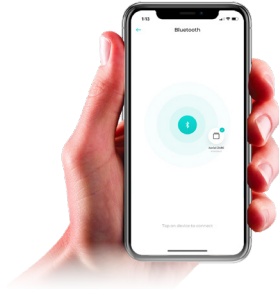




3 Connect the GemLightbox Aerial via Bluetooth

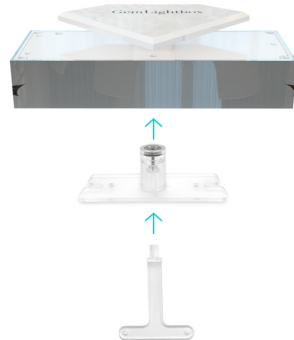
Open the GemLightbox Application and connect the GemLightbox Aerial via Bluetooth. The GemLightbox Aerial is designed for full compatibility and function with the GemLightbox Application.

The GemLightbox Application allows you to control Aerial with options to capture your jewelry at 360, 90 or 45 degrees at a fast or slow speed.



4 Plug-in the GemLightbox Aerial accessories

Attach the Necklace & Pendant Holder to the magnetic base of the GemLightbox Aerial. The Dangle Earring Holders or Watch Stand can also be inserted into the base of Necklace & Pendant Holder as required.



**Capture
dangling jewelry
images & videos
in style with the
GemLightbox
Aerial**

The GemLightbox Aerial is designed for full compatibility and function with the GemLightbox Application.

You will be able to control the Aerial manually via the Application, allowing you to capture your jewelry at any angle. Additionally, there are options to capture a 360, 90 or 45 degree video at a fast or slow speed.

Watch How to Setup the GemLightbox Aerial here:





How can I contact support?

You can access our support channel and knowledge base at

<https://support.picupmedia.com/>

If you wish to speak to a Picup Media team member, please visit

<https://picupmedia.com/contact-us/>

What is the warranty for the GemLightbox?

Unless specified by your country, the GemLightbox comes with a one year warranty.

To see our warranty policy, please visit the following page: <https://bit.ly/35uzgOr>

How can I clean my GemLightbox?

The GemLightbox is extremely durable. You can use a wet cloth and any household cleaner to clean your GemLightbox. Please ensure your GemLightbox is switched off and that the power cable is detached before cleaning.



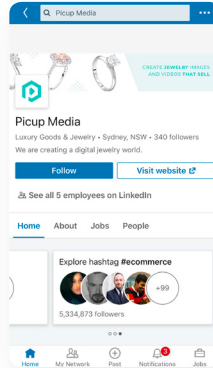
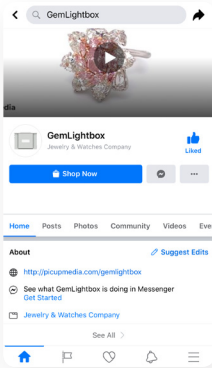
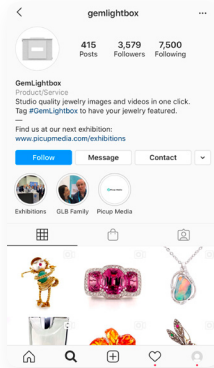
Please observe the country-specific disposal requirements

Join Our Community



Share your beautiful jewelry images with thousands of other GemLightbox users on our fan pages:

Join our #GemLightbox family



Thank you
for choosing GemLightbox



Please observe the country-specific disposal requirements