

Product Sheet

The ultimate AI-powered jewelry camera

The world's first camera designed exclusively for jewelers. Equipped with built-in yellow and white lighting, a sparkle and a macro lens. GemCam effortlessly captures the precise vivid colors and intricate details. The camera is AI-powered to recognize your jewelry, automate descriptions and remove backgrounds too. With the game-changing auto-focus mechanism, setup is simple – just plug in, connect to your computer, and start shooting.



Specifications

Dimensions	205*56*130mm/8*2.2*5.1in
Weight	800g/1.8lb
Resolution	8mp 4K UHD 30 fps
Zoom	5x Digital zoom
Focal Range	5-10cm/2-4in
Compatibility	Windows, MacOS, Linux
Connectivity	USB-C, USB-A
Lighting	White & Yellow LEDs

Features



Plug & Play, no training required.



Built-In White & Yellow LEDs to bring out true sparkles.



5x Zoom to capture details 5x better than a regular smartphone.



Made for **jewelry, gems & watches**.

Trusted by over 20,000+ jewelers

When you sell jewelry online, quality visuals are your best salesperson. GemCam helps you capture consistently perfect images and videos to maximize sales.



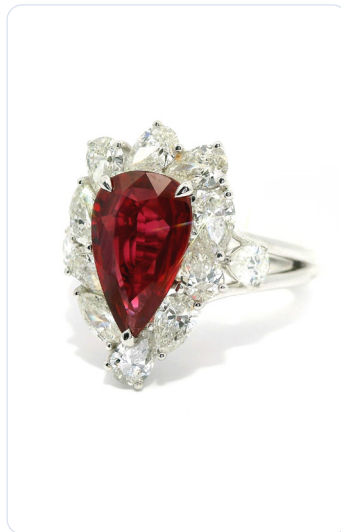
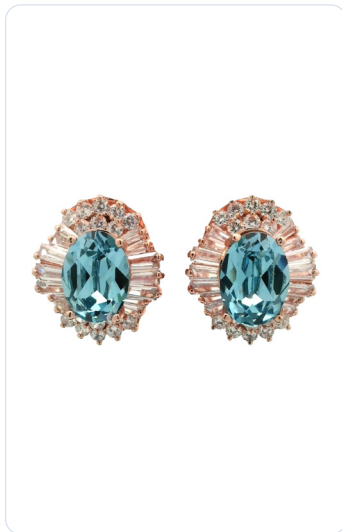


GemCam



USB-C Cable & USB-C to USB-A Adapter

Professional quality. Zero complexity.



Get in touch with us

Our team is always available to answer any questions you may have.
We look forward to helping you achieve stunning jewelry photography!



GemLightbox



+1 (646) 666-7737



hello@picupmedia.com



@gemlightbox

